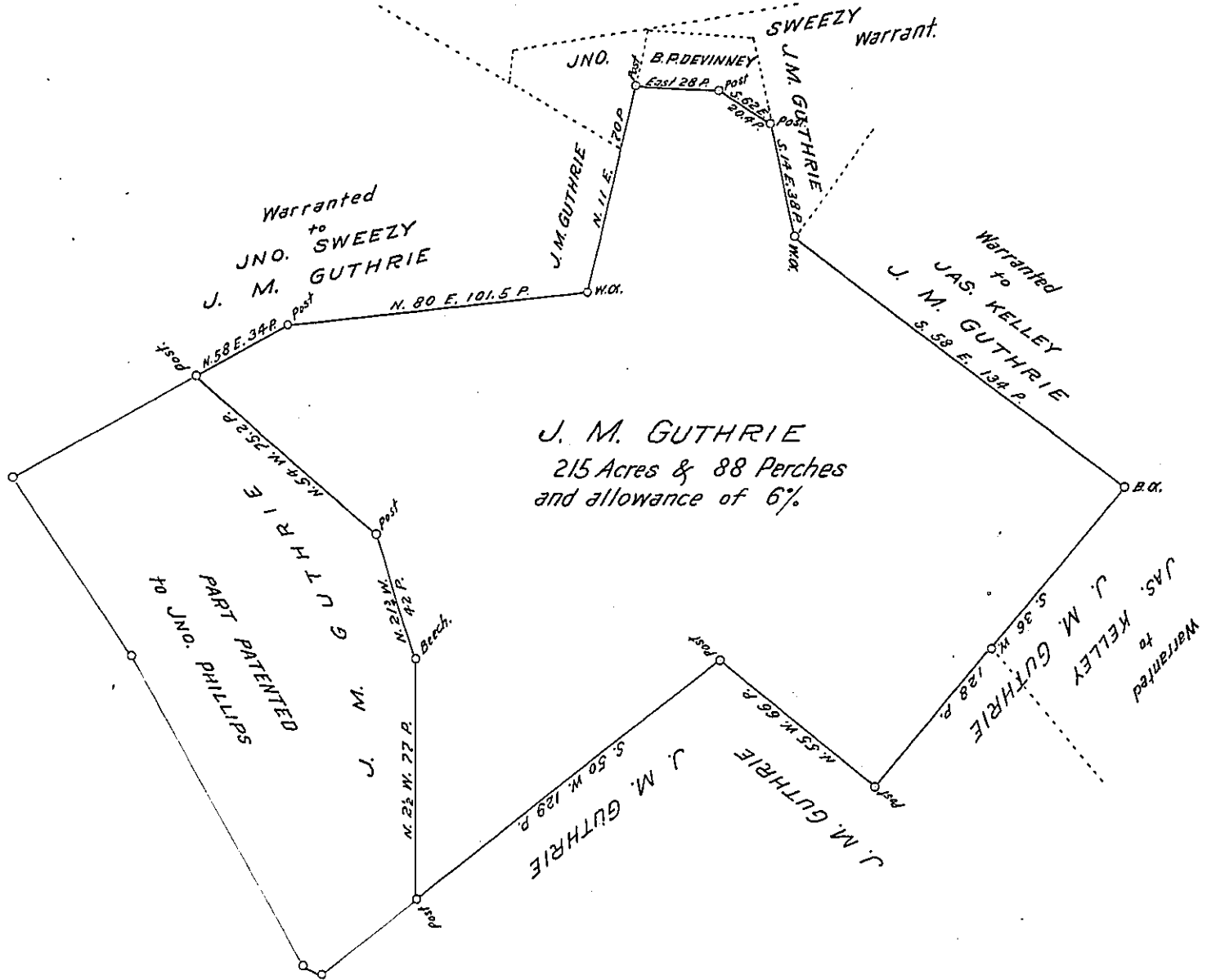


B-15



Surveyed the above described tract of land for Patenting April 10, 1891 for J. M. GUTHRIE. Originally Surveyed on a Warrant to JAS. CAMPBELL dated August 29, 1785 and Surveyed Oct. 25. 1785

Jno. R. Caldwell C. S.

IN TESTIMONY that the above is a copy of the original remaining on file in the Department of Internal Affairs of Pennsylvania, made conformably to an Act of Assembly approved the 16th day of February, 1833, I have hereunto set my Hand and caused the Seal of said Department to be affixed at Harrisburg, this

twenty-fourth day of July 1905

James P. [Signature]
Secretary of Internal Affairs.